

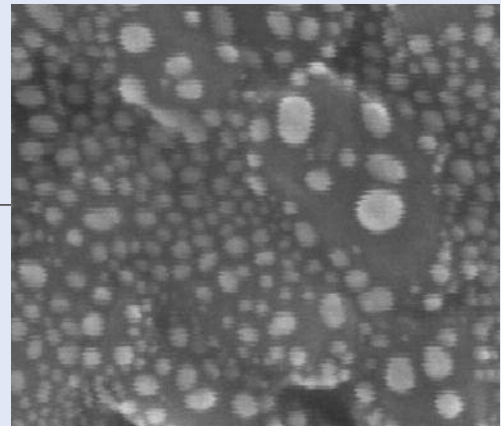
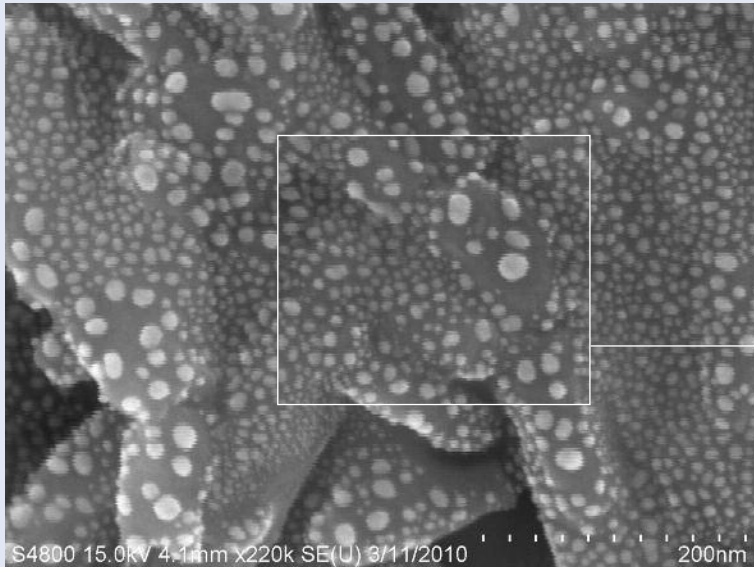
APPLICATION NOTE

Before and After Images, Hitachi S-4800 on STACIS® iX SEM-Base™ (actual customer supplied data)

Shown below are “before and after” images obtained by an Hitachi S-4800 Scanning Electron Microscope isolated on a TMC STACIS® iX SEM-Base™ at Nationwide Children’s Hospital in Columbus, Ohio. Images of a pure gold reference sample were taken at 200,000x magnification. In spite of the severe vibration environment (6th floor on a windy day), the SEM-Base™ yielded resolution within specification. These two images were taken immediately before and after the SEM-Base™ installation, respectively. No other variables were changed between photographs.



Before



After

